



FLORIDA DEPARTMENT OF TRANSPORTATION INVITES YOU TO A CONSTRUCTION OPEN HOUSE

SR-9/I-95 Bridge Painting Project at SR-842/Broward Boulevard and
SR-870/Commercial Boulevard
Broward County, FL
Financial Project ID: 443461-1-52-01, 443462-1-52-01

SR-9/I-95 BRIDGE PAINTING PROJECT AT SR-842/BROWARD BOULEVARD AND SR-870/COMMERCIAL BOULEVARD

The Florida Department of Transportation (FDOT), is pleased to provide information regarding the SR-9/I-95 Bridge Painting Project at SR-842/Broward Boulevard and SR-870/Commercial Boulevard in the City of Fort Lauderdale.

Construction Cost: \$8.3 million

Construction Start: January 2023

Estimated Completion: Fall 2024

PROJECT IMPROVEMENTS

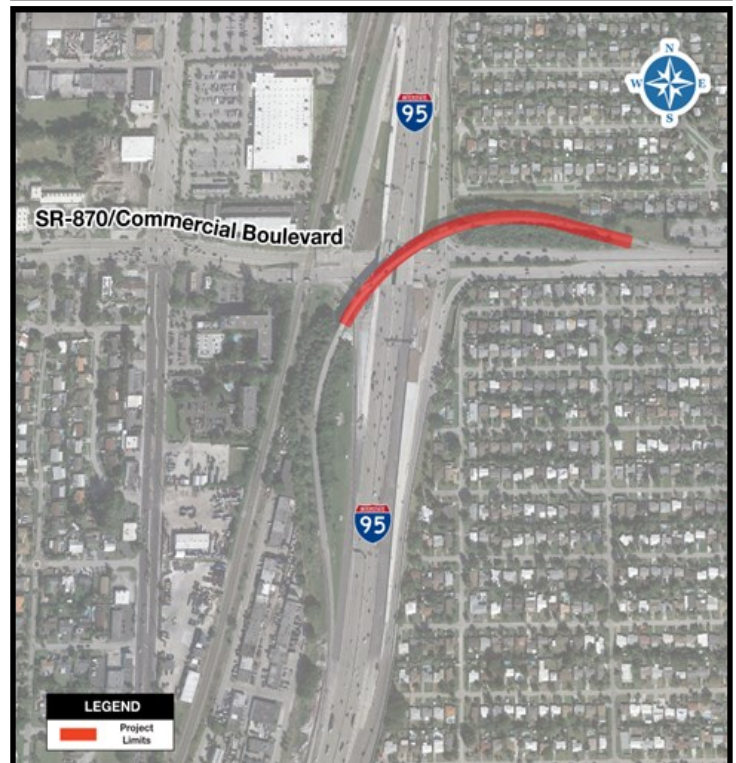
- Removing the existing paint and coating of the steel bridge substructure and superstructure
- Painting of five bridges

TRAFFIC IMPACTS AT SR-9/I-95 AND SR-842/BROWARD BOULEVARD

- SR-9/I-95 mainline is permitted to have up to three lanes closed nightly as needed, 10:30 p.m. to 5:30 a.m., Sunday through Thursday.
- The SR-9/I-95 ramps are permitted to have up to two lanes closed nightly as needed, 10:30 p.m. until 5:30a.m., Sunday through Thursday.
- SR-842/Broward Boulevard is permitted to have up to two lanes closed nightly as needed, 10:30 p.m. until 5:30 a.m. One lane may close at 10:30 p.m. and two lanes may close at midnight.

TRAFFIC IMPACTS AT SR-9/I-95 AND SR-842/COMMERCIAL BOULEVARD

- SR-9/I-95 mainline is permitted to have up to two lanes closed nightly as needed, 10:30 p.m. to 5:30 a.m., Sunday through Thursday. One lane is permitted to close at 10:30 p.m. and two lanes are permitted to close at 11:30 p.m., reopening by 5 a.m.
- The SR-9/ I-95 entrance ramp from westbound SR-842/Commercial Boulevard is permitted to close nightly as needed, midnight to 5 a.m., Sunday through Thursday.
- SR-842/Commercial Boulevard is permitted to have one lane closed nightly as needed, 9 p.m. until 5 a.m. Sunday through Thursday.
- Access to businesses and residential properties will be maintained at all times during construction.
- Additional lane closure information will be provided in the Weekly Traffic Impact Report distributed by FDOT and can be viewed using the following link: <https://d4fdot.com/bcfdot/closures index.asp>



CONTACT INFORMATION

William Grey, P.E. — FDOT Project Manager
william.Grey@dot.state.fl.us or (954) 540-0062

Daniela Silva — Community Outreach Specialist
msilva@corradino.com or (786) 441-3088

Yuriel Addine, P.E — Project Administrator
yaddine@apcte.com or (786) 873-7854

WEBSITE AND SOCIAL MEDIA

Twitter/Instagram: @MyFDOT_SEFL

Facebook: @MyFDOTSEFL

Project website: www.d4fdot.com



FLORIDA DEPARTMENT OF TRANSPORTATION MISSION STATEMENT

The Department will provide a safe transportation system that ensures the mobility of people and goods, enhances economic prosperity, and preserves the quality of our environment and communities.

Please contact the Community Outreach Specialist, Daniela Silva, to be added to project email notification lists. If special accommodations under the Americans with Disabilities Act (ADA) or translation services (free of charge) are needed, please contact the FDOT Project Manager, William Grey, at least seven (7) days prior to the Virtual Public Meeting and In-Person Construction Open House. Public participation is solicited without regard to race, color, national origin, age, sex, religion, disability, or family status.